

BULLDOG OPEN

DIVISIONS I - V

DATE: FRI -SAT - December 10 & 11, 2010 **PLACE:** WHS Hughes Event Center
TIME: Friday 7:00PM Saturday 9:00AM 300 N. Bulldog Circle, Wagoner, OK
ENTRY FEE: \$15.00 PER WRESTLER; wrestlers may only enter one weight per division, up to two divisions. Make checks payable to WTC.
NO REFUNDS FOR NO SHOWS.
REGISTER AND PAY AS A CLUB. INDEPENDENT ENTRIES MUST PAY IN CASH BEFORE WEIGHING IN. INDEPENDENT ENTRIES OF 2 OR LESS WILL RECEIVE FLOOR PASS ONLY, NOT GOOD FOR ADMISSION OR HOSPITALITY ROOM.
COACHES PASSES: 1-5 entries = 1 pass, 6-10 = 2, 11-15 = 3, 16-20 = 4, 20+ = 5 (Include coaches names with entries) Coaches passes will be available at weigh-ins.

ENTRY DEADLINE: Wednesday Dec 8, 2010, 9:00 PM

Enter at on-line at okwawrestling.com

ALL ENTRIES MUST BE IN WRITING - NO CALL-INS WILL BE ACCEPTED.

Any questions please call: Ed Miller 918-851-4814

WEIGH-INS: All weigh-ins will be in WHS Wrestling Room, SE Corner of gym.

ALL DIVISIONS: Friday Dec 10, 2010: 6:00 pm – 8:00 pm

Saturday Dec 11, 2010: 6:30 am – 8:00 am

DIVISIONS II & IV: Saturday Dec 11, 2010: 11:00 am – 12:00 pm

****WRESTLERS MUST MAKE WEIGHT IN COMPETITION SINGLET - NO ALLOWANCE****

WRESTLING TIMES: Friday Division V 7:00pm to completion

Saturday Divisions I & III 9:00 am to completion

Divisions II & IV 2:00 pm to completion

DIVISIONS & WEIGHTS

Div I (6 & under): 37,40,43,46,49,52,55,60,66,HWT.

Div II (8 & under): 43,46,49,52,55,58,61,64,67,70,75,83,90,105,HWT.

Div III (10 & under): 52,55,58,61,64,67,70,73,76,80,85,90,100,110,120,131,HWT.

Div IV (12 & under): 64,67,70,73,76,80,84,88,92,96,100,105,110,120,130,140,160,HWT(MAX 275)

Division V Weights: 78, 86, 94, 102, 110, 118, 126, 134, 142, 152, 165, 185, Heavy Wt.*

PERIODS

Division I: 1 – 1 - 1 (All matches)

Division II: 1 - 1 - 1 (All matches)

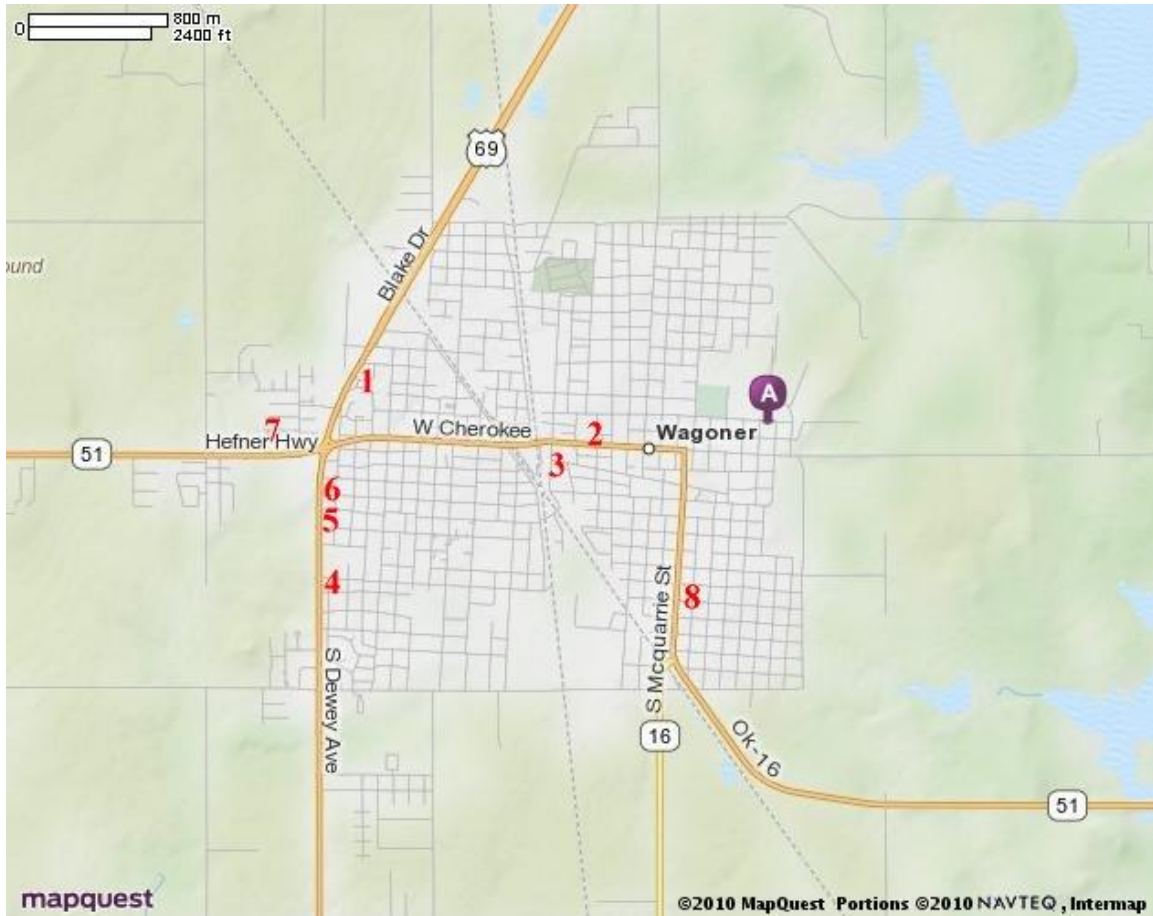
Division III – V: 1 ½ - 1 ½ - 1 ½ (Championship)

All Consolation: 1 – 1 – 1

FORMAT & RULES: Double elimination, no challenge for second. NFHS & OKWA rules apply except: headgear not required, no mandatory rest period. We reserve the right to combine weights or wrestle round robins if necessary. All wrestlers must have shoelaces secured. No seeding, but wrestlers from same club will be separated when possible.

GATE ADMISSION: Adult \$4.00 Students \$3.00

WAGONER TAKEDOWN CLUB AND/OR WAGONER PUBLIC SCHOOLS ARE NOT RESPONSIBLE FOR THEFT, ACCIDENTS OR INJURIES.



A. Hughes Event Center

- 1. Glen's Restaurant**
- 2. Boomerang Diner**
- 3. Main Street Café**
- 4. Subway**
- 5. Charlie's Chicken**
- 6. Pizza Hut**
- 7. Mazzio's**
- 8. Daylight Doughnuts**